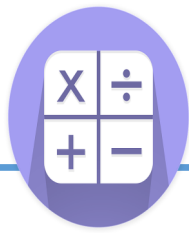


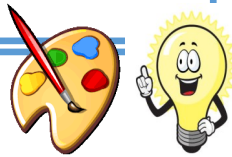


Let your light shine!



Maths

In this term we will further investigate fractions. We will look at comparing and ordering fractions, as well as ordering fractions on a number line. We will continue to recap length and perimeter, as well as all four of the main operations.



Art/DT — Sculpture & 3D— abstract shape.

Manipulating a range of materials, children learn ways to join & create free-standing structures inspired by the work of A. Caro.



Geography — Are all settlements the same?

Children will be able to describe the differences between villages, towns & cities, and explain why some early settlements were located where they were. We look at services needed to sustain settlements and identify human and physical features

Music— Developing singing

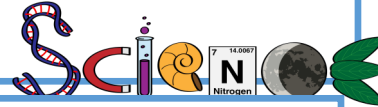
We will explore music notation, naming the notes and performing rhythms and songs accurately.



Year 3 Term 4 on a page 2025-26

Science — Plants

The children will look in detail at plans and what they need to grow. They will identify the parts of a plant, discuss seed dispersal and plant reproduction and growth.



Computing—Stop/go animation

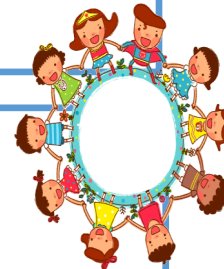
We will use a range of techniques to create a stop frame animation. We will also add music and media to our presentations.



PE— T1 rug-door Adven-tivity (OAA).

by & Out-turous Ac-

This half term we will be focussing on the basic rules & skills of T1 rugby, as well as looking at OAA. This involves reading maps of the school and orienteering around the site using these maps.

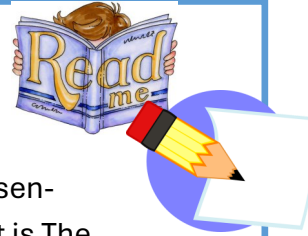


PSHE— Healthy me.

In this unit, we will look at how we fuel out bodies, and why we need to look after them. It includes respecting our bodies and being safe.

English

In English we will continue to look at and use conjunctions as well as adverbials to vary sentence openers. Our main text is The Iron Man by Ted Hughes, and we will be using this text to create our own narrative based on a key section of the text. To tie in with Geography, we will write a persuasive advert too.



RE— Which religious and worldview communi-ties can we find in our neighbourhood?

In this unit we will be looking at what it means to be a member of a communi-ty, and which religions are present in our community.



Important Notes

PE Day : Thursday & Friday

Termly Value: Hope

Homework: Set on a Friday.

Spellings, 99 club times tables and reading.

